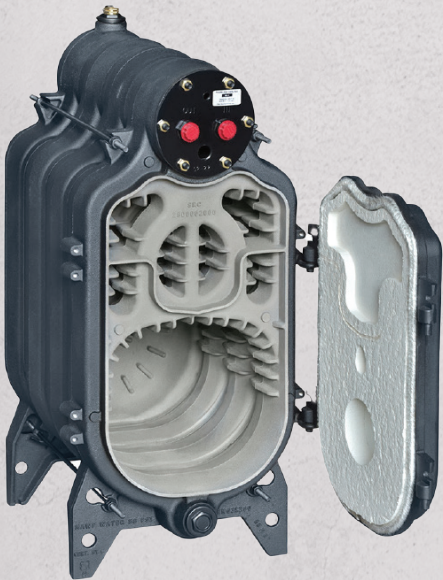


Saint Roch Cast Iron Boilers UNIVERSAL

The Universal is a light residential 3-pass design boiler which can be fired with B20/oil or gas(LP/Nat), making it a versatile choice for many applications.



**FINALLY A CAST IRON 3-PASS
TANKLESS BOILER!!!**

Use with or without a domestic coil... making this boiler truly UNIVERSAL.



**Output rates
from 106,000 to 190,000 BTU/HR**

THE SAINT ROCH SRU "UNIVERSAL" SERIES

The NEW SAINT ROCH SRU SERIES cast iron boiler with triple pass design and low water content is equipped with a cylindrical coil chamber to house a coil to produce DHW, making it truly UNIVERSAL. SRU boiler block will provide efficiencies exceeding 87%.

- The SRU's electronic 3250TC "Fuel Smart" controller manages the burner and circulator operation to minimize fuel consumption during periods of inactivity and provides outdoor reset or cold start for space heating and is equipped with low water control.
- St. Roch Cast Iron boilers are among the world's most durable boilers exceeding ASME, Class 30 requirements. Boiler sections are connected with steel push nipples. A hinged swing door is provided for full access to combustion chamber and heat exchanger.
- SRU Universal boilers are shipped as assembled boiler blocks with a separately boxed casing, pre-set gun burner (#2 Oil, B20, NG or Propane), DHW coil and trim kit.

You will enjoy confidence with the SRU series with its limited lifetime warranty and its capability to be converted from B20 Fuel Oil to Gas or vice versa by simply changing the burner.

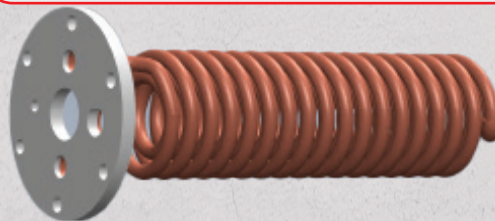
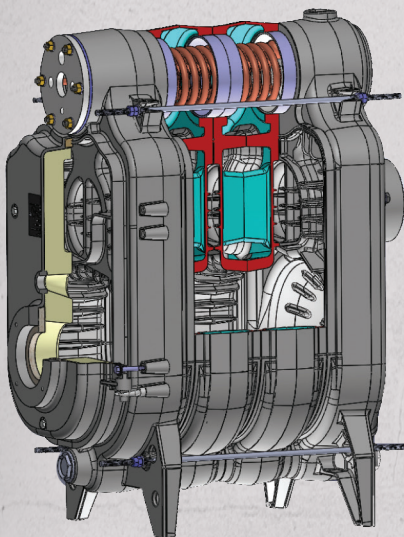
Product Code	Number of Sections	Heating Capacity (BTU/HR)	Output (BTU/HR)	Length (Inch)	Coil Size (GPM)	Water Content (gal)	Weight (Lbs)	Efficiency (%)
SRU30/	3	122	106	23.2"	4	10.6	337	87*
SRU40/	4	153	133	28.3"	5	13.8	425	87*
SRU50/	5	182	158	33.5"	5	16.7	509	87*
SRU60/	6	219	190	38.6"	5	19.6	599	87*

* Pending Final AHRI Certification



STANDARD FEATURES

- Modified Hydrostat 3250TC allows a controlled low-limit disable
- 1 1/4" NPT supply & return tapplings
- 3/4" DHW NPT Tapplings
- Full swing front door- for easy cleaning
- 6" Rear Flue
- 3&4 Section boiler can be direct vented



The coil is located above the fined columns of the heat exchanger which allows full flow across the coil. Maximizing DHW production.

