

Saint Roch

Cast Iron Boilers

S10

Cast-Iron Boiler System

THE NEW GENERATION OF WARMTH!

STANDARD FEATURES

- FULL swing door
- 3-Pass cast iron boiler
- Low mass boiler
- Oil, Bio and gas compatible
- Shipped knocked down
- Chimney and direct vent
- 5" Flue collar
- Limited lifetime, non-prorated warranty
- 1 1/4" Supply & return tapping's

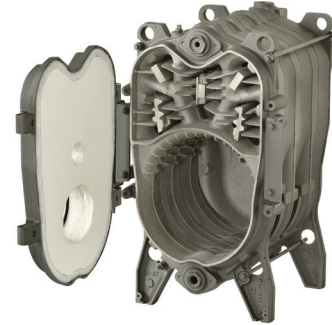


INPUT RATES
From 73,000 to 241,000MBH

QHT
INCORPORATED
The New Style of Warmth
www.qhtinc.com

THE SAINT ROCH S10 SERIES

The SAINT ROCH S10 Boiler Series is a highly efficient and versatile residential heating solution that is designed with the future in mind. It's adaptable to the upcoming requirements of standards, safety and efficiency. Using a unique diamond-shaped combustion chamber with a three-pass heat exchanger design and low water content, heat is quickly supplied for your heating zones and hot water needs. The S-10 Boiler Series is perfectly suited for panel radiators, radiant floor, finned-tubed, and hydro-air heating applications where it can achieve fuel savings of up to 40% over conventional single-pass boilers. The S-10 Boiler Series complies with ASME and UL standards and is Energy Star rated. The S10 Boiler Series is the cost-competitive heat and hot water system of choice.



New DIAMOND-shaped sections direct flue gases up the rear wall, then back toward the boiler door before exiting through the upper chamber—maximizing heat transfer surface area and improving efficiency.

Technical Information

Product Code	# of Sections	Length (Inch)	Water Content (gal)	Weight (Lbs)	Energy Star Compliant Rating or High Output Rating	Heating Capacity (BTU/HR)	Net Input (BTU/HR)	Output (BTU/HR)	Efficiency Gas (%)	Efficiency Oil (%)
S10/3	3	16.25	3.5	240	Energy Star Compliant Rating	63	73	54	85*	87+*
					High Output Rating	73	85	62	N/A	86+**
S10/4	4	20.25	4.7	297	Energy Star Compliant Rating	95	109	81	85*	87+*
					High Output Rating	105	122	89	N/A	86+**
S10/5	5	24.25	5.7	354	Energy Star Compliant Rating	133	153	113	85*	87+*
					High Output Rating	146	169	124	N/A	86+**
S10/6	6	28.25	6.7	409	Energy Star Compliant Rating	164	189	140	85*	87+*
					High Output Rating	169	197	144	N/A	86+**
S10/7	7	32.25	7.7	466	Energy Star Compliant Rating	201	231	171	85*	87+*
					High Output Rating	207	241	176	N/A	86+**

Available Burners



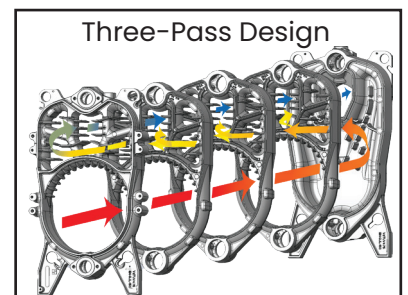
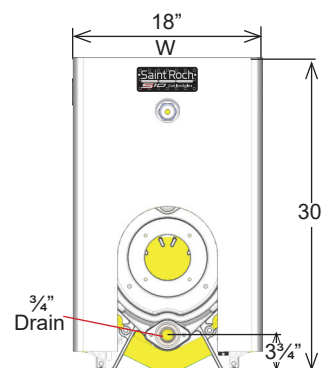
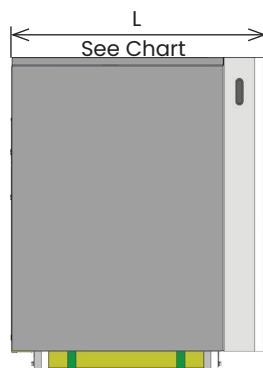
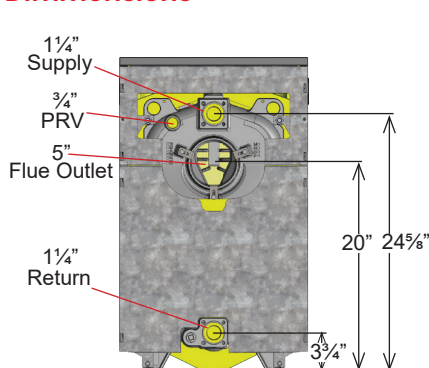
Beckett

RIELLO
Energy For Life

*All S10 boilers are shipped standard as Energy Star compliant (Gas does not qualify) **High output ratings require burner nozzle & setup change
Net output ratings are based on piping and pick-up allowances of 15%



Dimensions



QHT
INCORPORATED
The New Style of Warmth

www.saintroch.us

800-501-7697

www.qhtinc.com